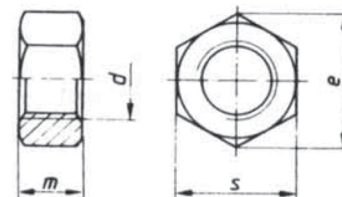


ECROU HEXAGONAL

hexagon nuts

DIN : 934



d	Pas	e	m	s		Qualité A2	Qualité A4
1,6	0.35	3.41	1.3	3.2		2HU016	4HU016
2	0.4	4.32	1.6	4		2HU02	4HU02
2,5	0.45	5.45	2	5		2HU025	4HU025
3	0.5	6.01	2.4	5.5		2HU03	4HU04
3,5	0.6	6.58	2.8	6		2HU035	4HU035
4	0.7	7.66	3.2	7		2HU04	4HU04
5	0.8	8.79	4	8		2HU05	4HU05
6	1	11.05	5	10		2HU06	4HU06
8	1.25	14.38	6.5	13		2HU08	4HU08
10	1.5	18.9	8	17		2HU10	4HU10
12	1.75	21.1	10	19		2HU12	4HU12
14	2	24.49	11	22		2HU14	4HU14
16	2.25	26.75	13	24		2HU16	4HU16
18	2.5	29.56	15	27		2HU18	4HU18
20	2.5	32.95	16	30		2HU20	4HU20
22	2.5	35.03	18	32		2HU22	4HU22
24	3	39.55	19	36		2HU24	4HU24
27	3	45.2	22	41		2HU27	4HU27
30	3.5	50.85	24	46		2HU30	4HU30
33	3.5	50.37	26	50		2HU33	4HU33
36	4	60.79	29	55		2HU36	4HU36
39	4	66.44	31	66		2HU39	4HU39
42	4.5	71.3	34	65		2HU42	4HU42
45	4.5	76.95	36	70		2HU45	4HU45
48	5	84.6	38	75		2HU48	4HU48
52	5	88.25	42	80		2HU52	4HU52